



Sunseeker Predator 55 - 7392555

£ 2,100,566 GBP Ex Tax



London Group

Boat Details	<b>Make</b> Sunseeker	<b>Model</b> Predator 55	<b>Model Year</b> 2025	<b>Location</b> France	<b>Max Speed*</b> 36 knots
Engines	<b>Details</b> 2 x Volvo Penta IPS 950	<b>Engine HP</b> 725	<b>Drive Type</b> Pod Drive	<b>Fuel Type</b> Diesel	
Dimensions	<b>LOA</b> 17.13m/56ft 2in	<b>Draft</b> 1.48m/4ft 10in	<b>Beam</b> 4.93m/16ft 2in	<b>Weight</b> 27975kg/27.98t	
Tankage	<b>Fuel Capacity</b> 1800l	<b>Water Capacity</b> 430l	<b>Black Water Capacity</b> 150l		
Accommodation	<b>Cabins</b> 3	<b>Guests</b> 6 Berth(s)	<b>Heads</b> 3		

\*Performance details are intended as a guide only and are not binding and do not constitute part of any terms and conditions.





## Description

The Predator 55 joins Sunseeker's iconic Predator range. Equipped with twin Volvo Penta IPS-950 engines, the 55 ft model reaches speeds of up to 36 knots.

The Sunseeker Predator 55's retractable glass and carbon fibre sunroof makes this model a stand out yacht within the Predator range. Operated via the helm console, the 2.5m x 3m sunroof electrically slides aft revealing the sky above. Combined with expansive glazing in all directions and a single piece double-curved windshield, the Predator 55 exudes a stylish exterior presence while natural light fills the interior space.

The aft cockpit seating can be repositioned to meet the fixed seating and table amidships with ample space for six and complete with an electrical sun canopy. The large sun pad over the garage features adjustable headrest bolsters and a view aft that guests will never tire of. Style and functionality work cohesively to define a yacht built for enjoyment. The angular aft fairleads form part of a stylish new rear design, integrated seamlessly into the hull with scalloped stainless steel engine vents sitting vertically outboard. With the addition of low-level LED deck lighting and a new fixed signature transom traverse, connecting port to starboard even with the bathing platform lowered, the aft profile is exquisitely proportioned without compromising functionality.

## Accommodation

A single-level main deck comprises a generous saloon and L-shaped galley. The galley side units connect with the linear cockpit wet bar so that with the patio door opened to port, there is an uninterrupted connection between inside and outside. Sight lines courtesy of the expansive glazing remain uninterrupted, connecting all on board with the horizon. Twin bolstered seats complement Sunseeker's exciting new-generation helm station.

In a standard arrangement, the lower deck makes full use of the available space, with two cabins, lower saloon to starboard and a storage room or optional utility room.

The luxurious full-beam owner's cabin offers generous private quarters. Upon entry to the lobby is a full-height wardrobe to starboard and an extensive en suite to port. The large double bed sits centrally with sofa seating, a sideboard and a second wardrobe outboard whilst a dedicated vanity unit and TV are positioned centrally. An equally spacious forward cabin benefits from an en suite and plenty of storage. With an emphasis on interior volume for long-distance cruising, both cabins benefit from increased headroom, elevating the feel of spaciousness.

The interior layout can be modified to suit an owner's exact requirements. This space has been specified as an optional twin cabin with en suite providing accommodation for up to six guests in comfort.





Hull Band to the waterline to be moulded in a colour other than the standard white

Second Volvo Penta Glass Cockpit 16" Multifunctional Chartplotter

Garmin GMR Fantom 54 Radar. 4ft Open array 72nm.

Garmin AIS800 Class B AIS with GPS and 2.4 meter AIS VHF antenna.

Two round Multifunctional displays - Lxnav e350 with Jog wheel control

Volvo Penta Assisted Docking System. The system includes the updated Dynamic positioning system antenna

Volvo Penta Joystick Driving

Compass Swinging and adjustment with correction card

Grey tank option with 430lts capacity

Air conditioning Tropical specification 80 000 BTU

Forward cabin Samsung 43" Smart 4K UHD Television with two speakers and amplifier with Bluetooth connectivity.

Upgrade to standard cockpit system - Fusion 3 channel amplifier and 10" Fusion Subwoofer

Fore deck entertainment - Fusion Apollo head unit with two Fusion Signature 7.7" marine speakers.

Drawer Dishwasher

Refrigerator freezer 24V 270lts in the Lower Lobby

Wine cooler option in the lobby of the aft Cabin

Marine Electric BBQ Grill fitted on the cockpit bar top

Stern docking Winches fitted port and starboard Cockpit

Electrically opening window at the helm

Underwater lights x 4 - Dual colour white / Blue

Generator Onan 17.5kW 50Hz

Diesel Magnetic fuel conditioning system for engines and generator

Volvo Penta Interceptor System with Auto Trim List and Active Ride Control feature - Gives automatic correction of the boats trim and list optimizing the performance in all conditions. The system effectively and automatically diminishes pitch and roll motion by up to 60 per cent at cruising speeds

Seakeeper 6 Gyro Stabilizer System

Hydraulic Telescopic Gangway in Stainless Steel

Fore deck removable table

32Kg Galvanised Anchor

90 Metres of Galvanised Lewmar 9.5mm anchor chain.

Folding back rests to the bow seating group

Fresh water deck wash system with outlets forward and aft including deck wash hose kit

Side Decks in Teak to include the anchor deck and Seating group deck

Electric stern sun canopy

Carbon fibre 4 pole sun sail shade on the foredeck

Cockpit Protective Covers for the seats aft sunbed and table

Sprung mattress for cabin beds

Optional lower decks layout with third cabin

Optional lower decks layout with laundry room with washer dryer in place of the utility space

Interior Wood Finish – Alpi Sand Oak Satin Finish

Hard Wood Flooring to Saloon and Galley

Hard Wood Flooring to main stairs from upper decks to lower decks

Spray detail for side glass detail below brow, aft cockpit side coamings in LSA

Black and inner cockpit face in XL Gel Black

Spray detail for Coach roof top face in LSA Black

Roman Blinds in aft, forward and mid cabins in lieu of Venetian

Heirlooms Bedlinen – Set of White Egyptian 300tc pure Egyptian cotton Classic plain sheets for forward and aft cabins. Comprising of fitted bottom sheet, flat top sheet, housewife and oxford style pillowcases

Forward and aft En-suite shower room faces and the forward bulkhead face to be Minerva faced in lieu of laminate

Exterior fabric upgrade

Interior Upholstery Upgrade – Gold and Platinum Collection

Full sea and system commissioning

Class XII safety kit for vessel based on 8 person. Safety kit can be modified to suit use and location of vessel (price may vary).

Shipping export cost to France



[Click here for Video](#)



[Click here for 360 Walkthrough](#)





























# Sunseeker

7 - Foredeck

GARMIN













































































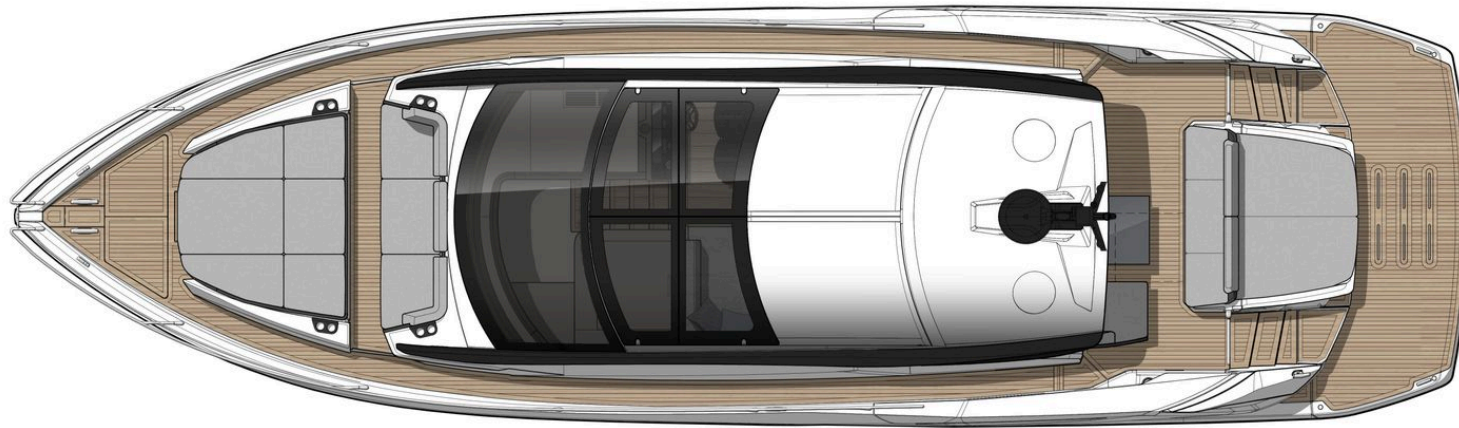




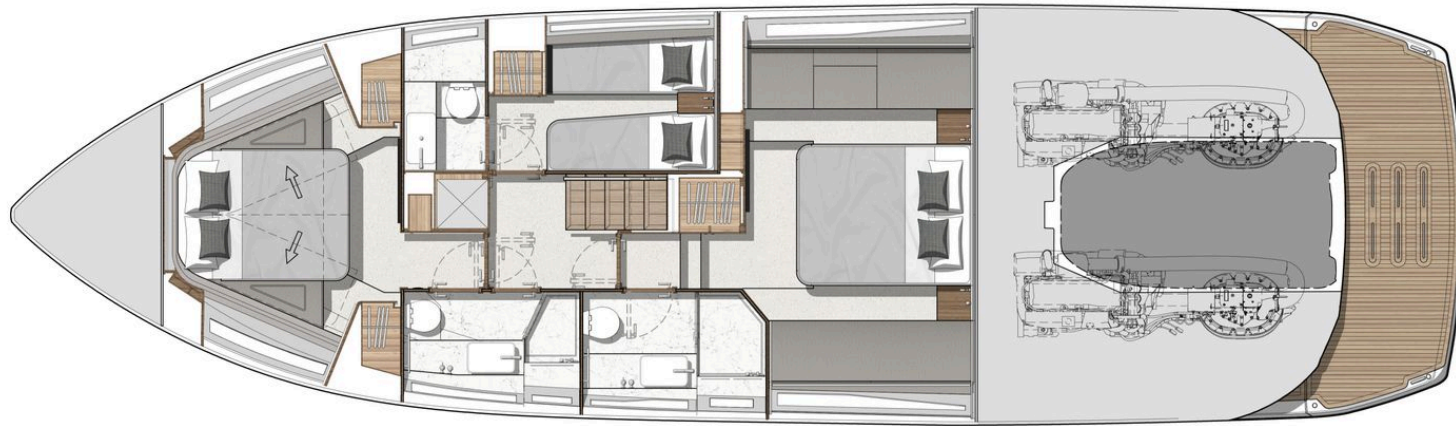
27 - Twin Cabin













Your Dedicated Broker

*Philippe Blattès*

philippe@pbyfrance.com  
(+33) (0) 609 69 22 34





Sunseeker France - PB Yachting, Port Camille Rayon, Golfe-Juan, 06220  
Tel: +33 (0)4 93 93 13 69

Sunseeker London Group presents the information and the details of this Vessel in good faith and does not expressly or impliedly guarantee or warrant the accuracy of this information nor expressly or impliedly warrant the condition of the Vessel. All information and details are intended as a guide only and are not binding and do not constitute part of any terms and conditions. A prospective purchasers should instruct his agents, or his surveyors, to investigate such details in order to validate all information. All prospective purchasers should be aware that the "Manufacturers Model Year" varies from builder to builder and does not necessarily correspond to the Vessel's year of build. This Vessel is offered subject to prior sale, price change, or withdrawal without notice. It is noted that this information may be displayed in various languages; however, the interpretation of the language that shall take precedence shall always be UK English.

**Renderings & promotional images might be used throughout this brochure. Actual boat may differ.**