

YACHT

PRE-OWNED

SANLORENZO

SX
88/

SX
88/



SX
88/







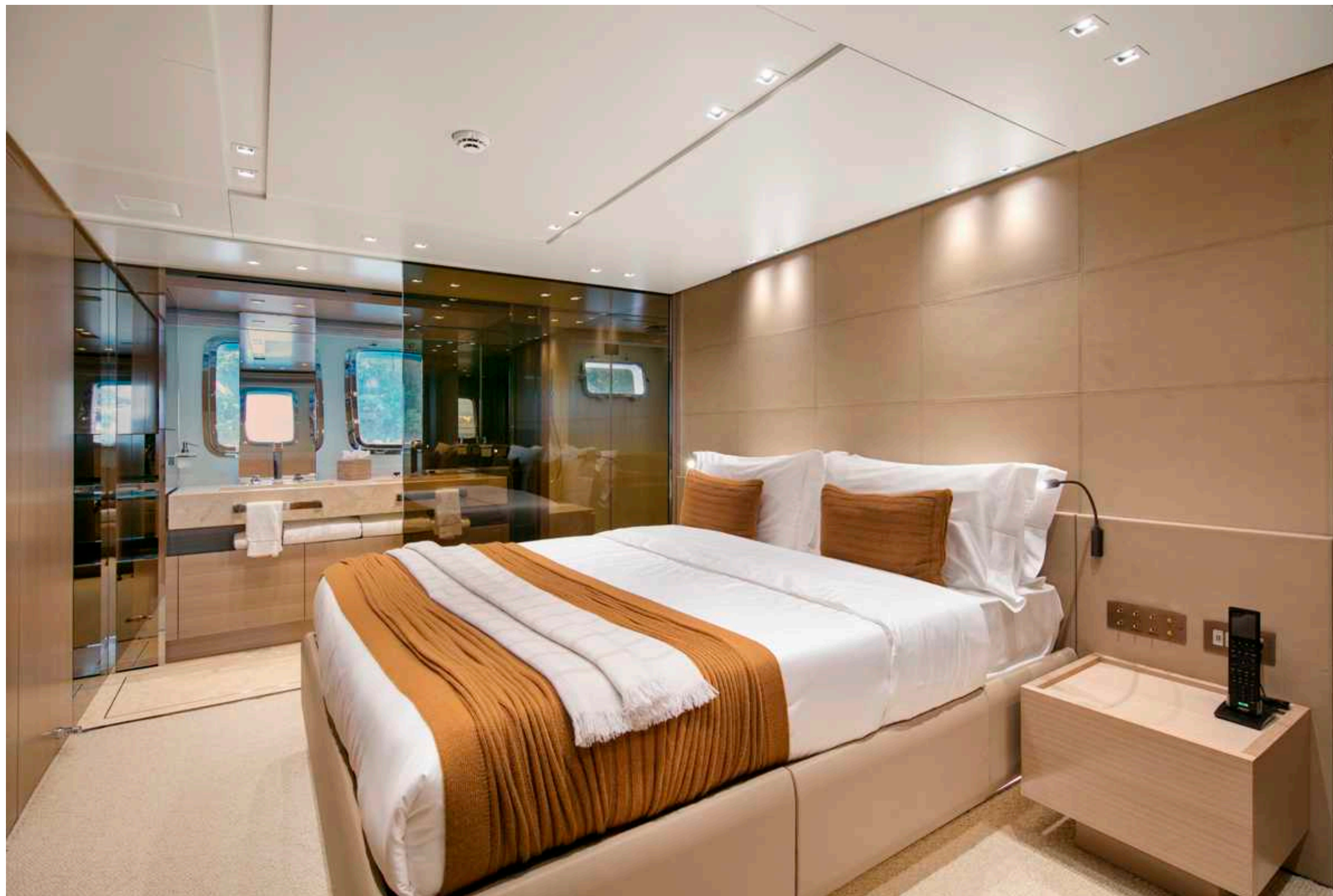


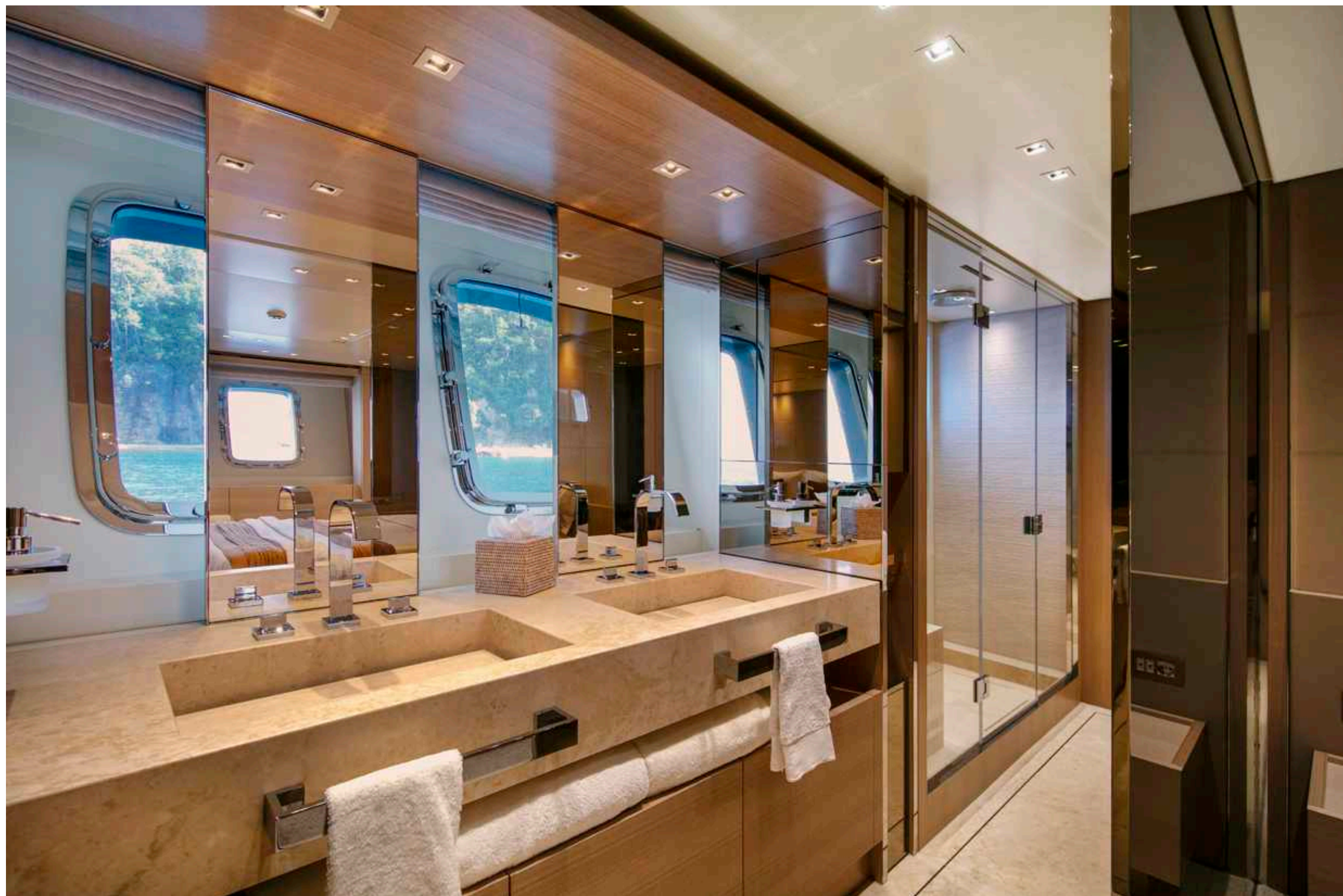






08. Owner's cabin





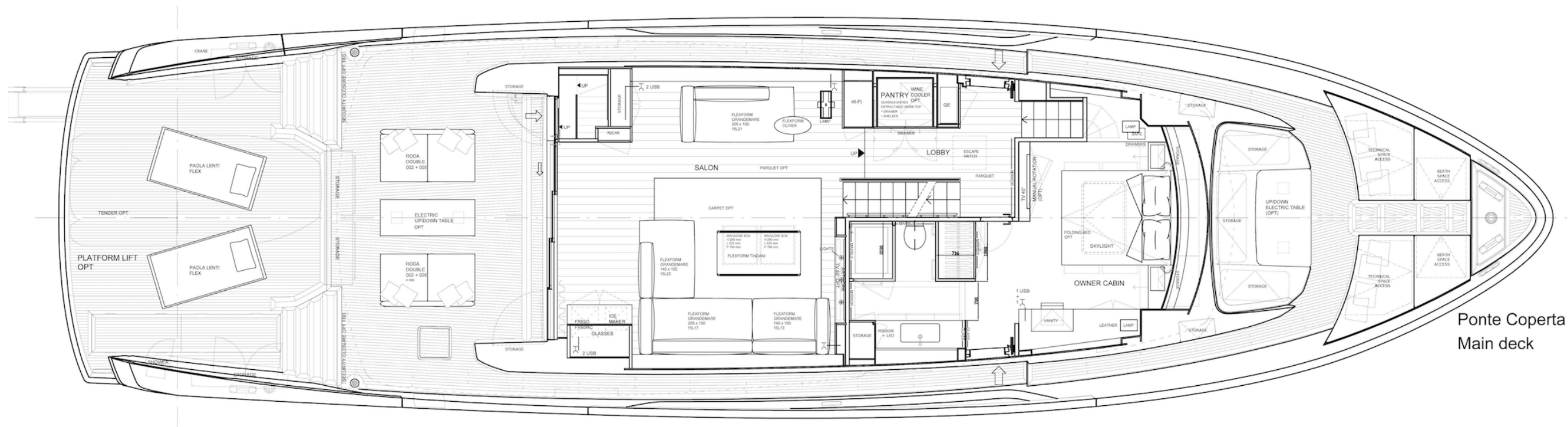
10. VIP bathroom

SX
88/

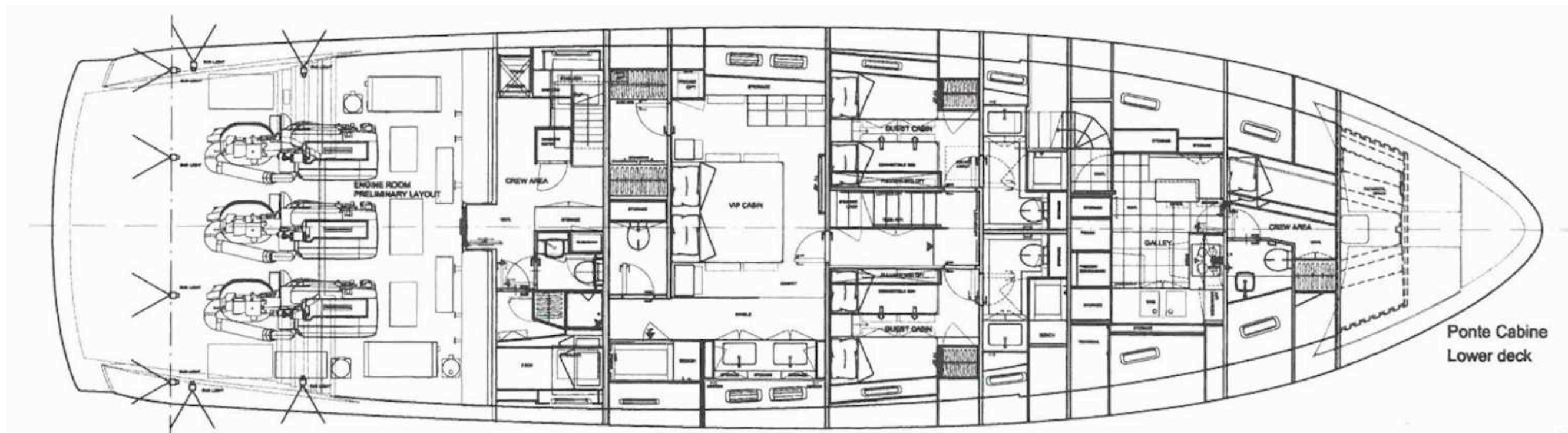








Ponte Coperta
Main deck



Builder: Sanlorenzo S.p.A.
Model: SX88
Year build: 2018
Length overall: 26.70 m
Beam: 7.20 m
Lying: SOF
Flag: British
Hull material: GRP
Engines: 3 x VOLVO D13 IPS1050 with extended Volvo warranty until July 2023
Engines power: : 3 x 800 Hp
Engine Hours : 700
Max Speed: 22 kn
Cruise Speed: 18 kn
Generators: Kohler 1 x 27 kW + 1 x 25 kW
Generators hours : 2100
Fuel tank: 8500 l
Fresh water tank: 2000 l
Price: € 4.600.000
VAT: NOT PAID

OPTIONS LIST

APPLIANCES

Cooking top MIELE CS 1212 I in ceramic glass on flybridge

Winecooler 23 Bottles

Microwave in galley

Ice maker VITRIFRIGO IM CLASSI EXTERNAL REFILL on flybridge

Additional lower freezer in crew aft area

Additional lower fridge in crew aft area

Additional fridge in VIP cabin

N°1 fridge in salon

N°2 MIELE CSI322 BG grill on flybridge

N°1 additional fridge on flybridge

N°1 microwave on flybridge

ENGINE ROOM EQUIPMENT

Water maker Idromar 230 lt/h

Pump for hot water circulation + Pump for oil change (no tank)

Charger battery 12V 25A for generators

Upgrade second generator 25kW

THRUSTERS & STABILIZERS

Electric stabilizers (at anchor and under navigation)

ALARMS & SECURITY

CCTV IP : 1 fixed in cockpit, 1 movable in engine room

MANEUVERING & CONTROLS

Second control station with only Volvo IPS joystick in cockpit (No engines levers are required)

Volvo Sky Hook (Dynamic Positioning System)

NAVIGATION ELECTRONICS

Raymarine DIAMOND configuration

AUDIO VISUAL EQUIPMENT

TV-Sat Antenna SEATEL ST24E + empty dome

Internet Wi-Fi System 4g with Harbour Hot Spot Antenna

COMPLEMENTS FOR THE EXTERIOR

Electric blades opening roof for Hard top

Sun awning for the stern area of the fly behind the Hard top

Teak floor on flybridge

External s/steel column shower

Hydraulic swim platform

Bow area bimini top

N.6 Underwater lights 7000 lumen (n.4 transom + n.2 side)

Aft cockpit external table with electric hilo system

Dimmer package for exteriors

Searchlight with control in helmstation

Foot switch for anchor windlasses (up/down)

Foot switch with revers function for stern capstans

OPTIONS LIST

Custom made electric table on flybridge (up-down system) top in lacquered wood	Additional safe in VIP cabin
n° 2 Custom made platforms (teak structure) on flybridge	Vanity and top in leather in owner's cabin
Custom made bar cabinet in teak	N.2 Paola Lenti FLEX sunbeds mattress
n° 1 custom table hi-low manual system, with sunbed transformation in bow area	Electric curtains in salon
Custom sofa on flybridge	Dimmer package for interiors
Summer cockpit cover for stern area	Washbasins integrated in Travertine marble (all bathrooms)
COMPLEMENTS FOR THE INTERIOR	Strip LED under beds and bedside tables (all cabins) and behind curtains in salon
Wood floor in the salon	Alessi table furniture (plats, glasses) for 12 pax
Owner and VIP bed with lifting system	N° 2 marble walls (n° 1 for each shower) in VIP and owner's bathrooms + wc area in owner's bathroom
Additional wardrobe in owner's cabin with key	Aguablu Zucchetti in all bathrooms + Thermostatic mixer in showers (TOT. N° 4)
Pullman bed in STBD Guest cabin	Shower head in all showers Zucchetti
Sliding beds in PORT Guest cabin	Carpet for cabins Super Tuft
Sliding beds in PORT Guest cabin	N°2 additional 220 V sockets + N°2 USB in salon (aft area, port side)
Upgrade owner's cabin on Main Deck forward	Vip shower : N°1 electric roller black out
Owner's cabin TV with manual rotation support	Master cabin : black out N°4 (N°2 roman shade + N°1 curled in cabin and N°1 roller in master's bathroom)
TV 65" in salon (diff. from GOLD package 50") with custom cabinet modification	Annexe WILLIAMS Dieseljet 445
TV hided by stopsol mirror in VIP cabin	
TV 22" in crew area	